



2022
Sustainability Report
SDG 12





LETTER FROM THE REPORT RECTOR

12



Ege University is a leading university, an example of the Turkish higher education system, which has received Turkey's first Institutional Full Accreditation Certificate and has the identity of a Student-Focused Research University.

Our University, with its 68-year deep-rooted history, strong academic staff, qualified scientific studies, distinguished students, and graduates, is to make a supreme effort to build a solid future for new generations by being sensitive to the realities of the world, our country and the society we live in. Ege University is a strong research institution with an entrepreneurship and innovation ecosystem where R&D, innovation, knowledge, and technology transfer take place between industry and university.

Ege University has adopted all the goals of eliminating inequalities, strengthening economic growth and employment, improving cities and residential areas, ensuring industrialization, protecting oceans and ecosystems, producing and consuming energy more sustainably, combating climate change, developing sustainable production and consumption, and empowering human rights. Our university operates within an adequate ultrastructure designable to implement all academic and operational activities within the SDGs framework.

We steadfastly persist in our pursuit of elevating Ege University into a vanguard research institution dedicated to pioneering technological advancements in support of sustainable development.

This report not only contains in-depth information about Ege University's remarkable efforts in each of the United Nations Sustainable Development Goals throughout 2022 but also reveals the key strategies of our institution. Moreover, it serves as a guiding compass, not only illuminating our efforts but also enabling a keener determination of our evolving needs and strategic plans.

In harmonious unity, we ardently endeavor to steer our institution towards a guiding and pioneering role by meticulously realizing our objectives through a management philosophy of fairness, equity, and accessibility.

I appreciate all my esteemed colleagues whose collective efforts have shaped this report.

With warm regards and respect..."

Prof. Dr. Necdet BUDAK
Rector



LETTER FROM THE REPORT TEAM

12



As the Sustainability Report Team, Ege University, we are proud and excited to present the third annual Sustainability Report of Ege University, one of Turkey's pioneering universities, prepared to concretize the University's commitment to sustainability and enable you to follow our sustainability-related efforts closely.

Sustainability lies at the heart of Ege University's main objectives. Besides, our university bears the responsibility of leaving a more livable world to future generations, and it emphasizes its determination to integrate sustainability principles in the fields of education, research, social contribution, and campus management. Over the years, Ege University has built a strong track record of offering sustainable solutions to address the challenges facing the university and society. In 2020, all these efforts culminated in establishing the Rankings Office. This move not only strengthened the university's commitment to sustainability but also led to the formation of sub-commissions focusing on various Sustainable Development Goals. These sub-working groups brought together academics and administrative staff from every faculty and the Rectorate, each contributing diverse perspectives and professional expertise.

What makes the Rankings Office even more dynamic is its inclusion of the Sustainability Report Team, which actively participates in all activities, thus enhancing the visibility of the office across the university.

Ege University aims to extend influence far beyond the boundaries of our institution. The EGE Sustainability Team seeks to be a trailblazer in instilling a culture of sustainability in other higher education institutions. Our Sustainability Team and its sub-working groups are going to serve as advisors to our university as well as to other universities, offering insights into Sustainable Development Goals and impact management. Furthermore, we are going to continue to be actively involved in educational initiatives that support schools on their sustainability journeys.

Beyond our campuses, we actively engage with local communities, businesses, and government entities to foster sustainable relationships, collaborate on solving common issues, and share our wealth of knowledge.

Ege University is unwavering in its commitment to the responsible management of resources to mitigate their impact on society, the environment, and the economy. This report offers a transparent and current source of information, providing valuable guidance to universities and stakeholders seeking to expand their knowledge on sustainability.

EGE University is actively dedicated to advancing sustainability through research, education, and innovation to become a leading institution in Turkey and worldwide. Our primary focus is on enhancing the accessibility, inclusivity, and affordability of our university for the benefit of our community. We cultivate positive partnerships with industry leaders to strengthen our engagement and ensure the use of environmentally sustainable practices that support innovation and research.

This report offers insight into EGE UNI's position in 2022 regarding enhancing sustainability in Turkey. We share our initiatives and commitments related to environmental, social, and economic sustainability, along with their corresponding impacts. We extend our gratitude to our sub-working groups, the Sustainability Report team, our dedicated students, EGE's esteemed academicians, and the Rectorate for their unwavering efforts this year to further our sustainable impact.

Our journey towards securing the sustainability of our world is an extensive and long way one. As the EGE Sustainability Team, we place our trust in the dedication of our university's staff and students to continue their improvements this year and sustain their endeavors well into the future.

We appreciate your interest in the Ege University Sustainability Report and eagerly welcome the feedback of our readers.

Assoc. Prof. Gökür ŞİŞMAN AYDIN
Coordinator of Sustainability Studies
Office of Institutional Development
Planning and Monitoring



RESPONSIBLE PRODUCTION AND CONSUMPTION

12



POLICY FOR PURCHASING, TRANSFORMATION AND LOGISTICS

Ege University adopts the Sustainable Green Campus policy, which prioritizes environmental awareness in all the activities of the university, carries out environmental activities in this direction, and aims to make the concept of sustainability a life culture for its students and employees during and after the education and training period. According to the Sustainable Green University Strategic Plan published in 2016, Ege University is working to establish an environment-oriented management system that includes purchasing, transformation and logistics activities.

FOOD AND MATERIAL PROCUREMENT PROCESS

Ege University has a reliable product and sustainable environment-oriented management system based on green supply chain principles in the food and material supply process, which includes purchasing, transformation and logistics activities, in order to meet the needs of students, academics and administrative staff. Ege University carries out the procurement of non-food materials by the Administrative and Financial Affairs Department (IMI). Work flow plans published on the website of the Department of Administrative and Financial Affairs provide transparent information about how procurement processes are carried out.

The products (yogurt, cheese, milk, kefir, ayran, eggs, olives, vegetable oils, butter, tarhana, ice cream, honey, propolis, seasonal vegetable and fruit fertilizers) produced by the Faculty of Agriculture are offered for sale on campus. In this way, students and staff can consume healthy and quality food. The sale of bread produced by Food Engineering is also in high demand among the people of the region.

Ege University has announced the policies it has developed to create a reliable product and sustainable environment-oriented management system based on green supply chain principles in the food and material supply process, including procurement, transformation and logistics activities, to meet the needs of students, academics and administrative staff with the 1st Sustainability Report.

In terms of nutrition services, all production activities in Ege University campus are carried out in the main kitchen located in the central campus. Breakfast, lunch and dinner services are provided in our student cafeterias and lunch service is provided in our staff cafeterias. There are 3 student dining halls and 9 staff dining halls in the central campus.



At Ege University Main Campus; Campus Metro Exit, Student Dining Hall No. I and in front of the Central Library and at the entrance of Computer Engineering and Polyclinics on the Hospital Campus, drinking water is provided to the campus population 24/7 in all four seasons with purified water dispensers placed at 21 points frequently used by students, employees, guests, and patients.

In our university, students can work part-time in temporary jobs according to Article 46 of the Higher Education Law No. 2547. The purpose of this practice is to enable our students to gain financial gain and improve their practical skills in line with their interests and abilities in areas suitable for their education in their free time outside of class hours, and to contribute to meeting the labor force requirements of the units in auxiliary activities.

Ege University plays an important role as an institution that carries out scientific research, education, social responsibility and cooperation activities to eliminate all forms of malnutrition. The University tends to use organic products produced in its own research and application centers instead of purchasing from suppliers to meet its food needs. In addition, bread produced by Food Engineering is used in student and staff canteens.

The First Sustainable Development Report of Ege University presents the current situation, targets, indicators and action plans for the elimination of all forms of malnutrition, including data, analyses and recommendations on issues such as food insecurity, food loss and waste, food systems and biodiversity.

Organic products produced in research and application centers and bread produced by Food Engineering meet a significant portion of the food needs of the student and staff cafeterias of the Department of Health, Culture and Sports. In addition, the products (yoghurt, cheese, milk, kefir, ayran, eggs, olives, vegetable oils, butter, tarhana, ice cream, honey, propolis, seasonal vegetable and fruit fertilisers) produced by the Faculty of Agriculture are offered for sale on campus. The sale of bread produced by the Food Engineering Department is in high demand from the local community.



WASTE MANAGEMENT

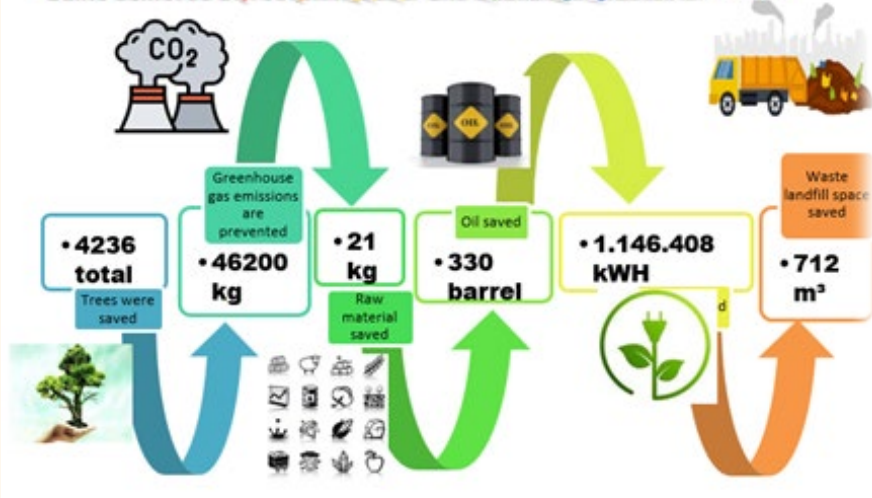
Ege University implements an "Integrated Waste Management System" to ensure the environmentally safe disposal of hazardous wastes generated from educational, academic, research, and service activities.

In the approach of "Waste Management," the "Leaf-Branch-Trunk" model is employed, encompassing processes from the point of waste generation to its environmentally sensitive disposal. "Waste Reduction" constitutes the backbone of our university's Sustainable Green University policy, implemented since 2017.

It has been observed that the amount of waste that goes into recycling has increased every year with the transition to the zero-waste system, training, and increasing awareness since 2018.



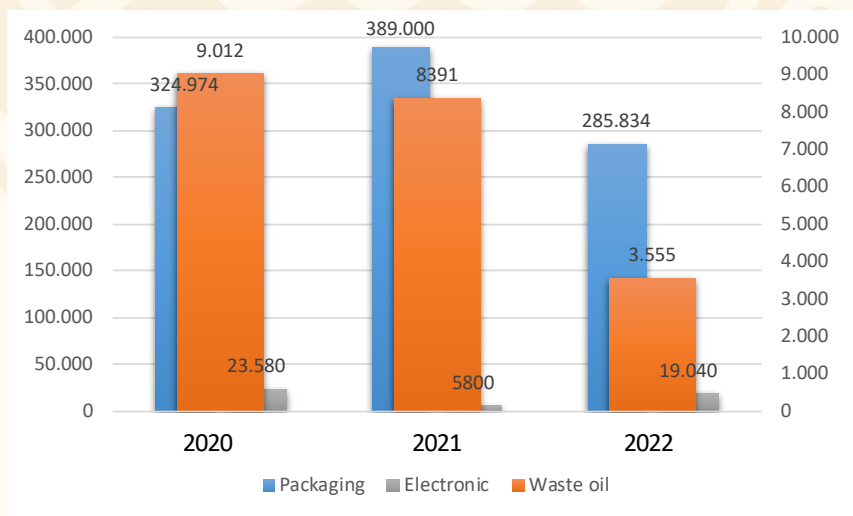
Gains achieved by recycling paper and packaging wastes in 2022



As a result of the studies carried out within the scope of the "Zero-Waste" Project initiated by the Ministry of Environment and Urbanization, our University was awarded a "Zero Waste Certificate". Ege University became the first educational institution in Izmir to receive this certificate on a campus basis.



- Packaging; Paper-Plastic-Glass-Metal-Composit**
- Hazardous; Solvents, fluorescent lamp, cartridge, battery, toner**
- Medical; syringe, slide, lamella, tissue, organ, etc.**
- Electronics; Obsolete computer parts, cables, electronic gadgets; etc.**
- Organic; Food waste**



ZERO WASTE ACTION PLAN

Ege University adopts an environmentally sensitive approach for a sustainable future. In this direction, the basic management policy of the university is the "Zero-Waste" approach, which aims to reduce the use of disposable materials. With the Zero-Waste Certificate obtained in 2020, all wastes on campus are managed within the framework of regulations. Studies to reduce the use of plastic are also carried out within the scope of the "zero-waste" project.



«The Principal of Zero-Waste» is taught for two weeks within the scope of the "Introduction to University Life" course to first-year students of most departments at the university, and students are required to take this

WASTE MANAGEMENT

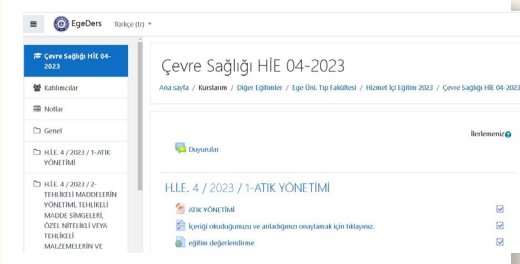
Ege University has been chosen as a leading university within the scope of the "Zero Waste Project" initiated by the Ministry of Environment and Urbanization. Ege University is the first state university to implement the project, which was initiated to use resources more efficiently and reduce the amount of waste. Efforts to reduce the use of plastic at our university are carried out within the scope of the zero-waste project. The application was made for the Zero Waste Certificate and as a result of the inspections, our University was entitled to receive the Zero Waste Certificate as the "Ege University Central Campus". Ege University became the first educational institution in İzmir to receive a "Zero-Waste Certificate" on a campus basis.



Within the scope of the Zero-Waste project at our university, waste is collected in 6 waste boxes inside the buildings.



Zero-waste information courses are given to all our students who are new to the university within the scope of the Zero Waste policy.



1432 staff were trained within the scope of zero waste at the Faculty of Medicine.

POLICY FOR MINIMIZATION OF WASTES

In order to reduce paper consumption, E.U. It started to use the electronic documentation system (ENVISION), which was entitled to receive the "green office certificate".



Water dispensers prevent our students from using plastic by filling their own water bottles.

3 mobile waste collection centers were placed on the campus and opened to the service of the community. These centers are designed for waste separation and recycling and help campus residents sort their waste more easily and efficiently. Mobile waste collection centers are located at different points on the campus and campus residents can drop off their waste at these centers on a daily basis.



9.473 trees



189 tons of waste



47 tons water

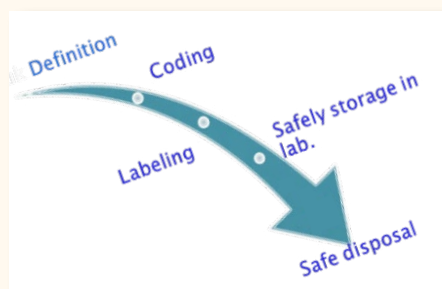


2.673 tons of CO₂



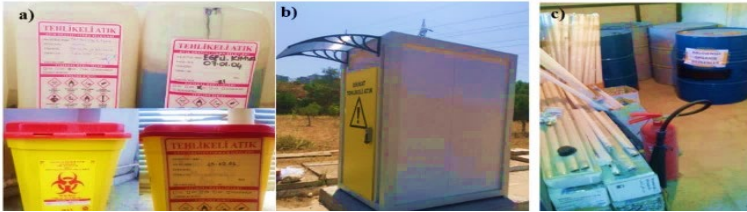
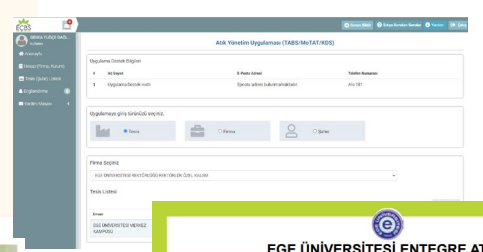
HAZARDOUS WASTE MANAGEMENT

Hazardous wastes generated in laboratories are collected in hazardous storage stations and disposed of within legal periods. Within this scope, pieces of training in coordination with the Ministry of Environment and Urbanization are given to our personnel assigned as hazardous waste coordinators and controls are made regarding the process.



The Portable Battery Manufacturers and Importers Association (TAP, <https://tap.org.tr>) was contacted and provided Waste Battery boxes for all our departments on each floor. At the same time, posters prepared by TAP were procured and placed on these waste battery boxes on the floors to raise awareness. On the other hand, it was aimed to raise awareness of environmental protection by distributing Small Waste Battery boxes to the rooms of all our academic and administrative personnel in our departments, and this service was offered up to the offices.

Ege University records all its waste on the website of the Ministry of Environment and monitors and tracks it from there.



ACTIVITIES

Ege University organizes many different activities in order to raise awareness among students and society.

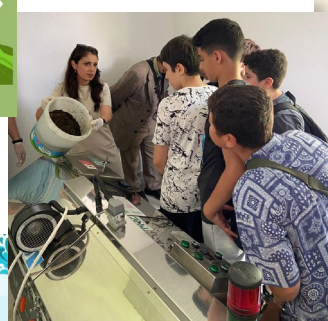


For a sustainable world and less consumption, Ege University organizes the "Barter Market" with students and staff.



"Ege University aims to work to leave a cleaner world for future generations"

Posters made with the aim of raising awareness of the society on important environmental days.



The compost machine, which transforms organic waste into cat and dog food, has been put into operation for the recycling of cafeteria waste. The composting machine transforms organic waste from dining halls into cat and dog food. The composting machine helps to dispose of cafeteria waste without harming the environment and transforms it into cat and dog food. The compost machine not only improves the environmental performance of the campus but also contributes to the nutrition of the pets of the campus residents. For more activities, ...??



THE Impact Rankings Methodology 2024 & GRI Index Matrix

THE	Impact Rankings Methodology 2024 Version 1.1	GRI	Disclosure	Reported	Page
12.1	Research on responsible consumption and production			Fully	
12.2	Operational measures			Fully	1-6
12.2.1	Ethical sourcing policy Have a policy on ethical sourcing of food and supplies	GRI 306: Waste 2020	306-2 Management of significant waste related impacts	Fully	1
12.2.3	Policy waste disposal-hazardous materials Have a policy, process or practice on waste disposal - Covering hazardous materials		306-2 Management of significant waste related impacts	Fully	2-4
12.2.4	Policy waste disposal - landfill policy Have a policy on waste disposal - to measure the amount of waste sent to landfill and recycled		306-3 Waste generated	Fully	2-4
12.2.5	Policy for minimisation of plastic use Have policies around use minimisation of plastic		306-2 Management of significant waste related impacts	Fully	5-6
12.2.6	Policy for minimisation of disposable items Have policies around use minimisation of disposable items		306-2 Management of significant waste related impacts	Fully	5-6
12.2.7	Disposable policy: extensions to services Ensuring these policies extend to outsourced services and the supply chain		306-2 Management of significant waste related impacts	Fully	5-6
12.2.8	Minimisation policies extended to suppliers Ensuring these policies extend to outsourced suppliers and the supply chain - (suppliers of equipment, stationary, building contracts)?		306-2 Management of significant waste related impacts	Fully	5-6
12.3	Proportion of recycled waste				Fully
12.3.1	Waste tracking Measure the amount of waste generated and recycled across the university	GRI 306: Waste 2020	306-4 Waste diverted from disposal	Fully	2-3-5
12.3.2	Proportion of waste recycled		306-4 Waste diverted from disposal	Fully	2-3-5
	Amount of waste generated		306-3 Waste generated	Fully	3
	Amount of waste recycled		306-4 Waste diverted from disposal	Fully	2-3-5
	Amount of waste sent to landfill		306-5 Waste directed to disposal	Fully	
12.4	Publication of a sustainability report			Fully	
12.4.1	Publication of a sustainability report	GRI 2: General Disclosures 2021	2-3 Reporting period, frequency and contact point 2-4 Restatements of information 2-18 Evaluation of the performance of the highest governance body 2-22 Statement on sustainable development strategy	Fully	1-7



EDITOR: Assoc. Prof. Dr. Gökür ŞİŞMAN AYDIN

AUTHOR: Res. Assist. Dr. Tuğçe DAĞLIOĞLU

TRANSLATION: Dr. Esra YATAĞANBABA - Dr. Ferah ŞENAYDIN

GRAPHIC DESIGN: İpek TEKİN

www.surdurulebilir.ege.edu.tr